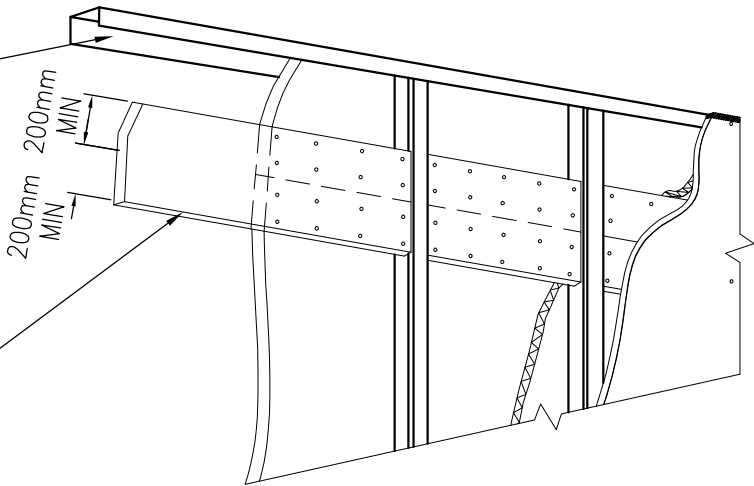


RONDO DEFLECTION HEAD
J-TRACK FIXED TO
CONCRETE SOFFIT WITH
APPROVED FASTENERS
@ 600mm CTRS MAX AND
100mm MAX FROM ENDS

WHERE HORIZONTAL CH-STUDS
ARE NOT INSTALLED OVER JOINTS,
25mm SHAFTLINER™MOULDSTOP
TO BE LAMINATED FULL WIDTH,
200mm ABOVE AND BELOW THE
HORIZONTAL JOINTS USING TYPE
"L" LAMINATING SCREWS @
150mm CTRS



HORIZONTAL BUTT JOINT WITHOUT HORIZONTAL CH-STUD

SCALE: NTS

SHAFTLINER™MOULDSTOP AND
FIRESTOP®PACKERS FIXED TO
FLANGE OF DEFLECTION HEAD
J-TRACK WITH MIN 45mm
TYPE "D" SCREWS @ 300mm
CTRS MAX

13mm FIRESTOP®
PACKER

25mm KNAUF SHAFTLINER™
MOULDSTOP PACKER
25mm KNAUF SHAFTLINER™
MOULDSTOP PANEL

64mm RONDO
CH-STUDS @ 600mm
CTRS MAX

SHAFTLINER™MOULDSTOP PACKERS FIXED TO
FLANGE OF DEFLECTION HEAD J-TRACK WITH MIN
45mm TYPE "D" SCREWS @ 300mm CTRS MAX.
INNER PACKERS LAMINATED TOGETHER WITH 50mm
TYPE "L" SCREWS @ 300mm CTRS MAX.

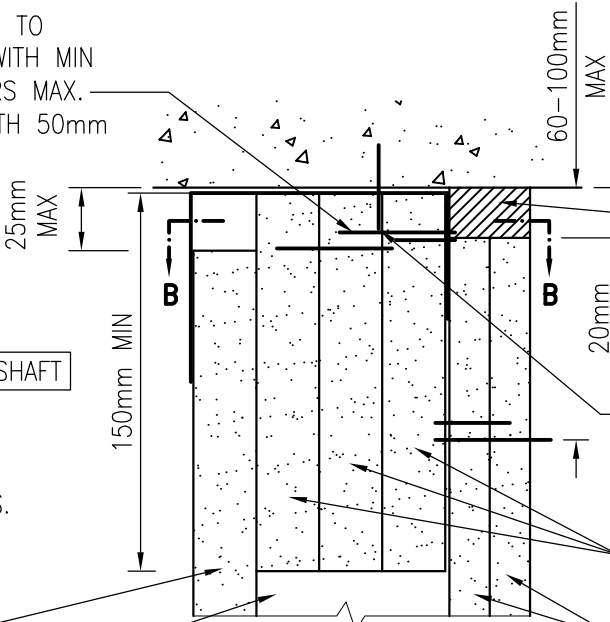
20mm MAX GAP TO BE
CONTINUOUSLY SEALED WITH
FIRESOUND®SEALANT

64mm RONDO DEFLECTION HEAD
J-TRACK FIXED TO CONCRETE SOFFIT
WITH APPROVED FASTENERS @ 600mm
CTRS MAX AND 100mm MAX FROM ENDS.

TWO LAYERS OF KNAUF FIRESTOP®AS
SPECIFIED FOR SHAFTWALL SYSTEM

25mm KNAUF SHAFTLINER™
MOULDSTOP PANEL

102mm RONDO CH-STUDS
@ 600mm CTRS MAX



ALTERNATIVE DEFLECTION
HEAD DETAIL – 102mm CH-STUDS

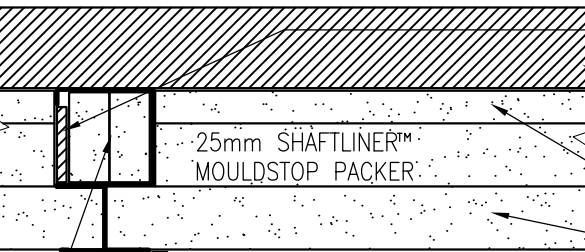
20mm MAX GAP TO BE
CONTINUOUSLY SEALED WITH
FIRESOUND®SEALANT

102mm RONDO DEFLECTION HEAD
J-TRACK FIXED TO CONCRETE
SOFFIT WITH APPROVED FASTENERS
@ 600mm CTRS MAX AND 100mm
MAX FROM ENDS

25mm SHAFTLINER™MOULDSTOP PACKER

TWO LAYERS OF KNAUF FIRESTOP®
AS SPECIFIED FOR SHAFTWALL
SYSTEM

ALTERNATIVE DEFLECTION
HEAD DETAIL – 64mm CH-STUDS



2x16mm KNAUF
FIRESTOP®PACKERS
150mm HIGH AND
FIXED TO WEB OF
CH-STUD

SECTION A-A

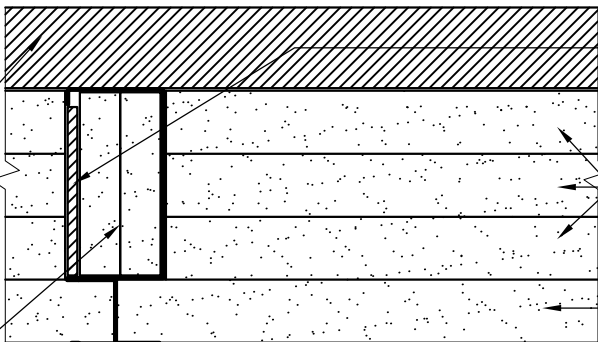
VOIDS FILLED WITH FIRESOUND®
SEALANT TO MIN 20mm DEPTH
20mm MAX GAP TO BE CONTINUOUSLY
SEALED WITH FIRESOUND®SEALANT

13mm FIRESTOP®PACKER

25mm KNAUF SHAFTLINER™
MOULDSTOP PANEL

64mm RONDO CH-STUDS
@ 600mm CTRS MAX

2x16mm KNAUF FIRESTOP®
PACKERS 150mm HIGH AND
FIXED TO WEB OF CH-STUD



102mm RONDO
CH-STUDS @ 600mm
CTRS MAX

SECTION B-B

VOIDS FILLED WITH FIRESOUND®
SEALANT TO MIN 20mm DEPTH

25mm KNAUF SHAFTLINER™
MOULDSTOP PACKER

25mm KNAUF SHAFTLINER™
MOULDSTOP PANEL

ALTERNATIVE SHAFTWALL INSTALLATION DETAILS

SCALE: NTS

FRL AS PER TABLE
[FC12549]

LINING SIDE 1	LINING SIDE 2	FRL
1x25SL	2x13FS	-/90/90
1x25SL	1x13FS + 1x16FS	-/120/120
1x25SL	2x16FS	-/120/120

SL=SHAFTLINER™MOULDSTOP

FS=FIRESSTOP®

Notes:

- Recommendation and proposed systems are subjected to the project engineer and building surveyor/certifier's approval. If approved, a copy of the construction drawing should be sent to Knauf for review.
- All details provided in this document are to be read in conjunction with the relevant Knauf brochures. All installation and construction details are to be in accordance with Knauf's specification.
- All acoustic ratings provided are ± 2 dB for Rw, and ± 3 dB for Rw+Ctr.
- Any lining designated as FIRESTOP can be replaced by IMPACTSTOP or MULTISTOP ONE or ONE HI of equal or greater thickness without adversely affecting fire resistance level or acoustic rating. Replacing IMPACTSTOP or MULTISTOP ONE or ONE HI with FIRESTOP may reduce acoustic performance, refer Knauf for information.
- Any lining designated as 10mm SHEETROCK ONE can be replaced by 10mm SHEETROCK PLUS without adversely affecting acoustic rating. Replacing 10mm SHEETROCK PLUS with 10mm SHEETROCK ONE may reduce acoustic performance, refer Knauf for information.
- Any lining designated as 13mm SHEETROCK ONE can be replaced by 13mm WETSTOP without adversely affecting acoustic rating. Replacing 13mm WETSTOP with 13mm SHEETROCK ONE may reduce acoustic performance, refer Knauf for information.

REV.	DESCRIPTION:	BY:	DATE:
2	MARKET UPDATE	TH	01/10/25
1	APPROVED FOR ISSUE	DA	15/09/22

AMENDMENTS:

KNAUF

TECHNICAL CENTRE

17/47 Turner St
Port Melbourne Vic 3207 AUSTRALIA
TecAssist: 1800 811 222
W: www.knauf.com E: TecAssist@knauf.com

SHAFTWALL ALTERNATIVE

TITLE: INSTALLATION DETAILS

GS	2	01/10/25
DRAWN.	REVISION.	DATE.

SHW-005

DRAWING NO.